

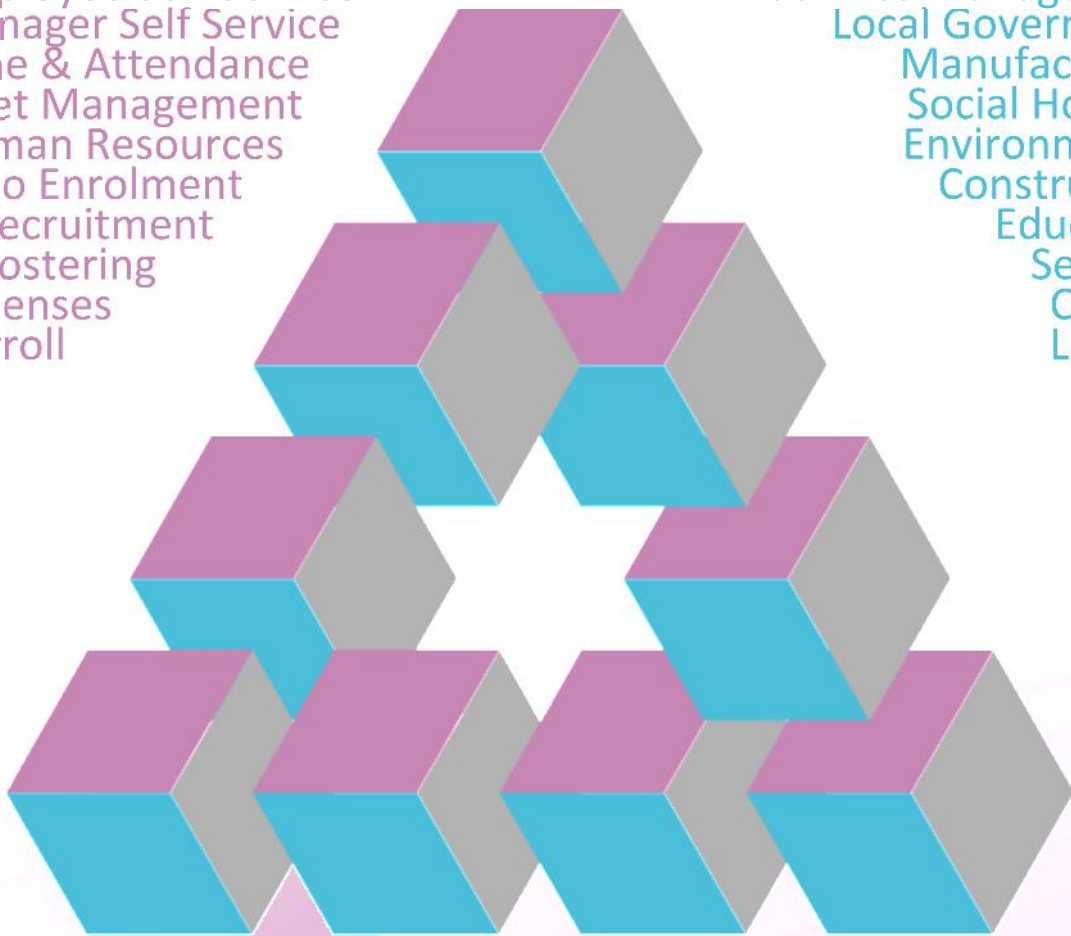
# PYRAMID

HUMAN RESOURCES LIMITED

*Software with Vision*

Employee Self Service  
Manager Self Service  
Time & Attendance  
Fleet Management  
Human Resources  
Auto Enrolment  
e-Recruitment  
e-Rostering  
Expenses  
Payroll  
RTI

Facilities Management  
Local Government  
Manufacturing  
Social Housing  
Environmental  
Construction  
Education  
Services  
Charity  
Leisure  
Retail



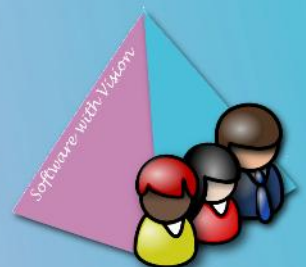
## Contact Us:

Pyramid Human Resources Limited  
Holly Farm Business Park  
Honiley  
Kenilworth  
CV8 1NP

Tel: 01926 485085 (option 1)

E-mail: [sales@pyramidhr.co.uk](mailto:sales@pyramidhr.co.uk)

Web: [www.pyramidhr.co.uk](http://www.pyramidhr.co.uk)



# Key Features

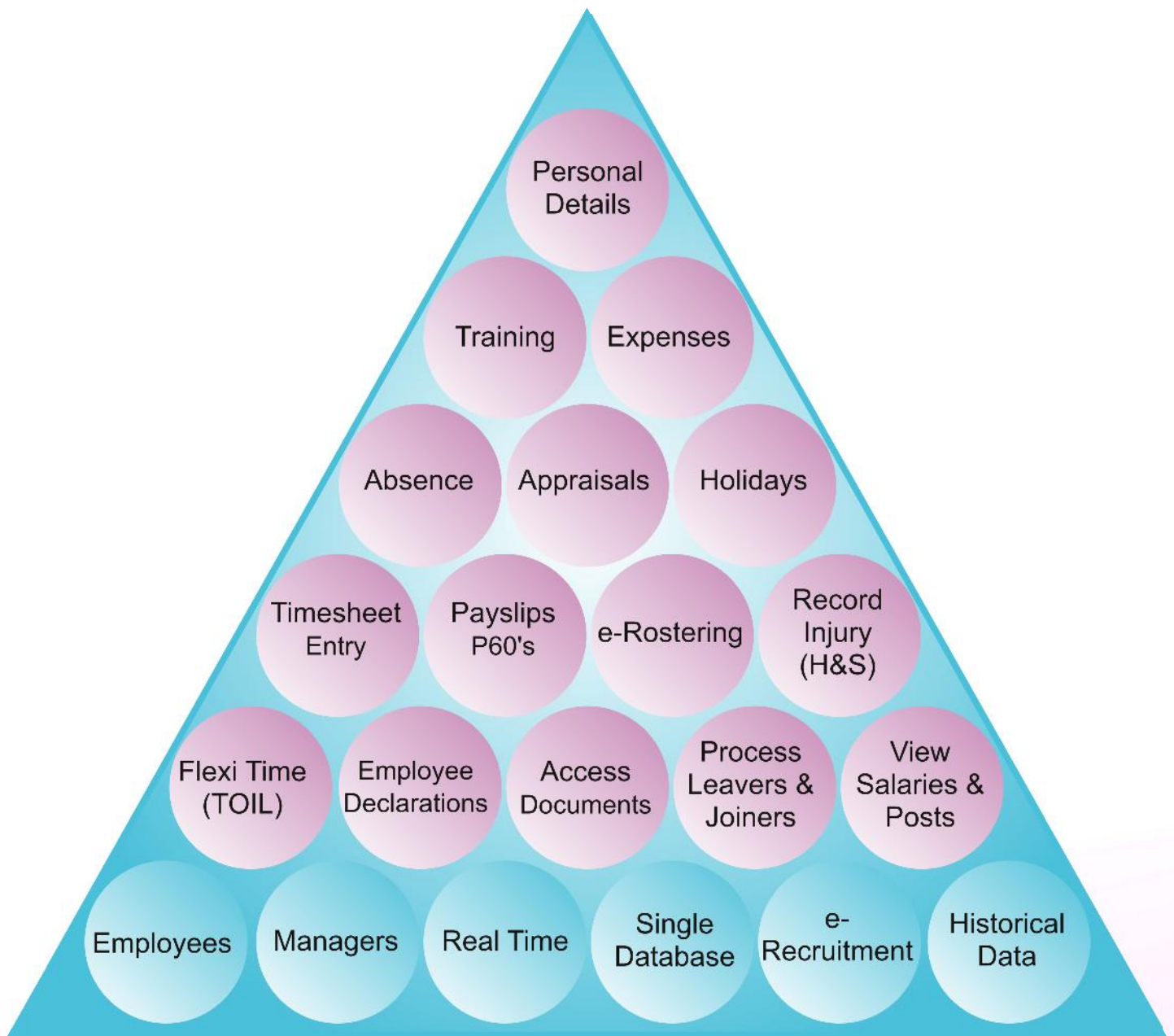


## Key Benefits

- Intuitive, Scalable, Powerful
- 
- Real Time processing
- 
- Single Microsoft SQL Database - Single Application
- 
- Data Warehouse'. Optimised to hold all historical data 'on line' resulting in powerful statistical and analytical reporting.
- 
- Integrated client definable security



# Self Service with Vision



## Key Benefits

Empowers Employees & Managers

-  
Assists refocus of HR & Payroll personnel from clerical data processors to advisors working for the employee rather than 'on' the employee.

-  
Multi Browser Support (Internet Explorer, Chrome, Firefox and Safari)

-  
Minimum IT Support required - Inbuilt user password reset.

